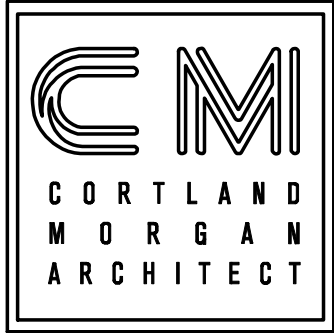


DRC

PZ25- 12000051
01/21/2026

DATE: 10.27.2025
JOB NO: 112793
DRAWN: STAFF
CHECKED: CM
KENDALE PROJECT #25-720



711 N. FIELDER RD.
ARLINGTON, TX 76012
PH: (817) 635-5696
FAX: (817) 635-5699

KENDALE

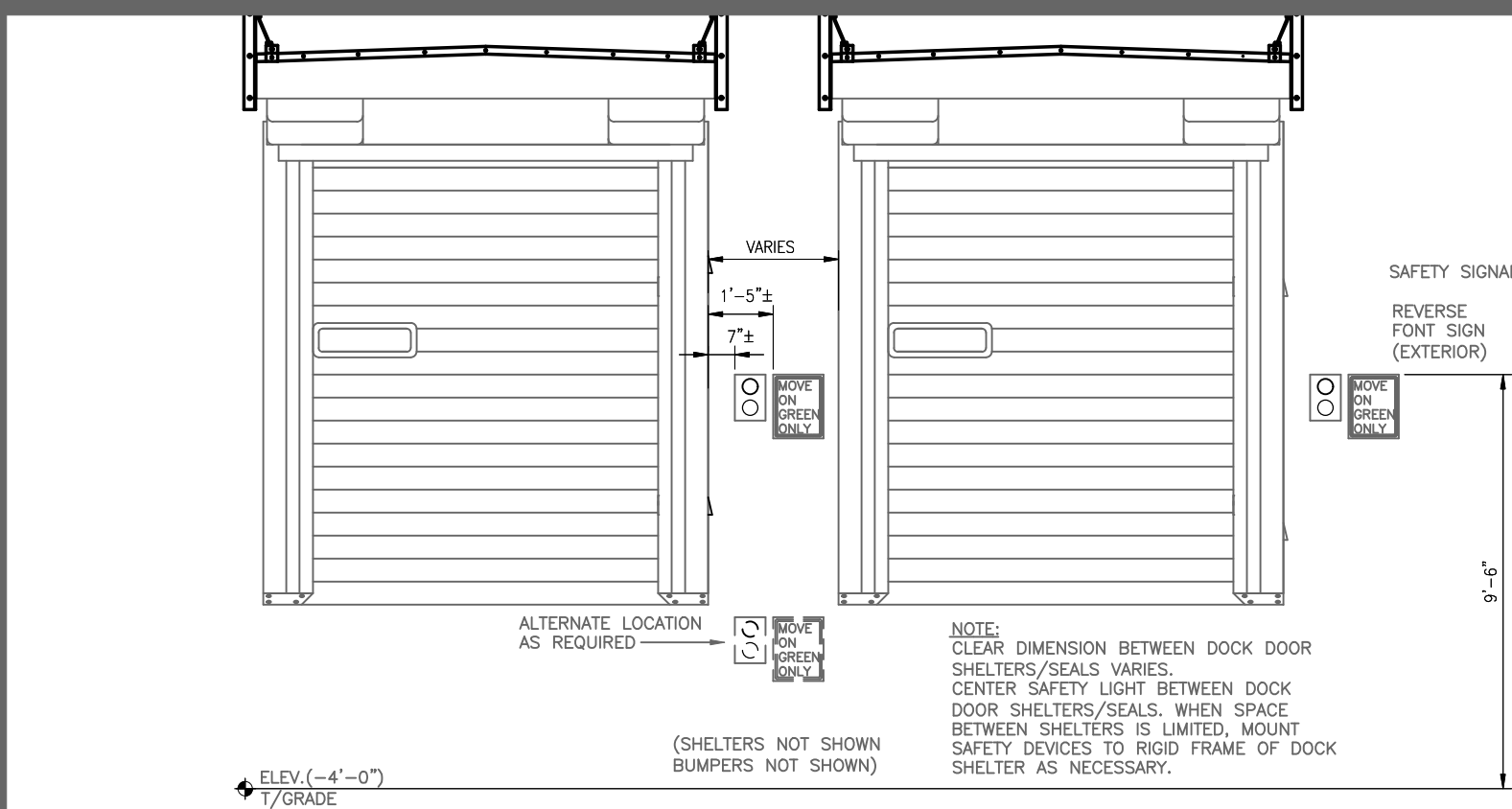
FEDEX
RENOVATION FOR NETWORK 2.0
2600 Northwest 19th Street
Pompano Beach, FL, 33069

NOTE: BOARD UP / SECURE DOOR OPENINGS
NIGHTLY AS REQUIRED UNTIL NEW DOOR IS
INSTALLED.

NOTE: SEQUENCE WORK AS NOT TO
INTERFERE WITH FXG SORTS / VAN TRAFFIC.

08 BOARD-UP SIGNAGE

SCALE: N.T.S.



RED/GREEN SAFETY LIGHT:
APPROVED MANUFACTURERS/VENDORS, MODEL NUMBERS.

- DL MANUFACTURING, #SS0552
CONTACT: TOM EPPLEY, ph: 1-513-401-1160
- FAIRBORN USA, INC., SYSTEM MODEL#FXG-SGLCS-5000-LED
CONTACT: 1-800-262-1188

DOCK DOOR FANS:
APPROVED MANUFACTURERS AND MODEL NUMBERS.

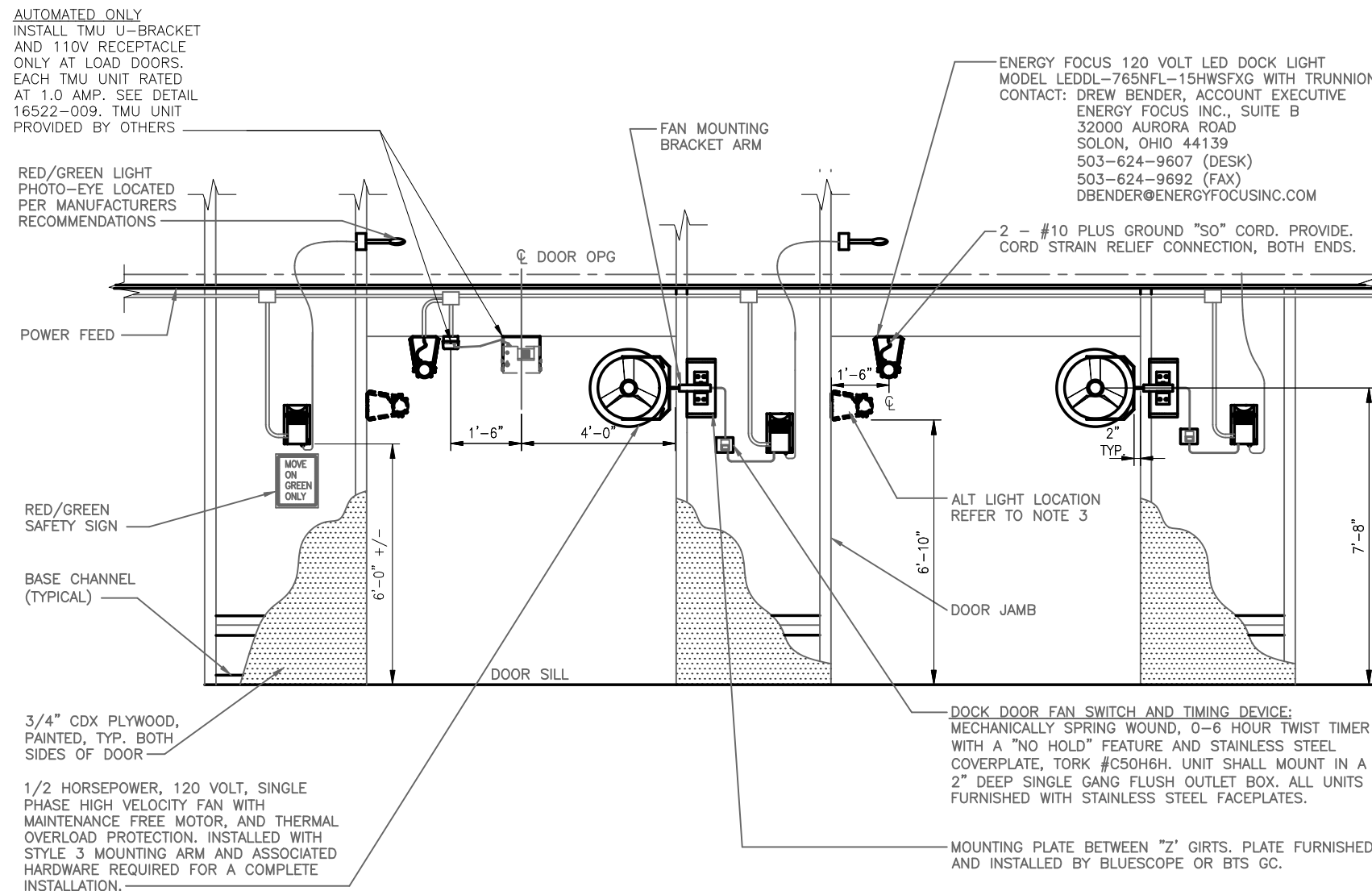
- ROMLAIR MODEL NO. R-DF-18FXG
CONTACT: BERNADETTE MACKENZIE, V.P. SALES
1-800-766-5247
- AIRMAX MODEL NO. MM-16-TB
CONTACT: DAVID HICKLIN
1-800-394-9739
- PATTERSON MODEL NO. PF-TC-18
CONTACT: JACK DAVENPORT
1-800-766-3985

NOTE:

- APPLIES TO:
 - AUTOMATED STATIONS WITH 12K AND BELOW THRUPUT
 - ALL MANUAL STATIONS
- THE TRUCK DOOR FAN IS NOT REQUIRED AT THE FOLLOWING DOCK DOOR LOCATIONS UNLESS OTHERWISE NOTED:
 - TRASH COMPACTOR AND/OR DUMPSTER DOORS
 - UTILITY DOORS - CURRENT AND FUTURE
 - FUTURE LOAD AND UNLOAD DOORS
- INSTALL SIDE MOUNTED LED TASK LIGHT, DETAIL 16522-008, IN LIEU OF HEAD MOUNTED UNIT. ONLY INSTALLED AT DOORS WITH THE 420S DOCK SHELTER. REFER TO BUILDING ELEVATIONS OR BUILDING PLAN FOR SPECIFIC DOOR LOCATIONS.

05 STANDARD DOCK DOORS DETAILS (EXTERIOR)

SCALE: 1/4" = 1'-0"



AUTOMATED ONLY
INSTALL TMU U-BRACKET
AND 110V RECEPTACLE
ONLY AT LOAD DOORS.
EACH TMU UNIT RATED
AT 1.0 AMP. SEE DETAIL
16522-009, TMU UNIT
PROVIDED BY OTHERS.

RED/GREEN LIGHT
PHOTO-EYE LOCATED
PER MANUFACTURERS
RECOMMENDATIONS

RED/GREEN
SAFETY SIGN

BASE CHANNEL
(TYPICAL)

3/4" CDX PLYWOOD,
PAINTED, TOP, BOTH
SIDES OF DOOR

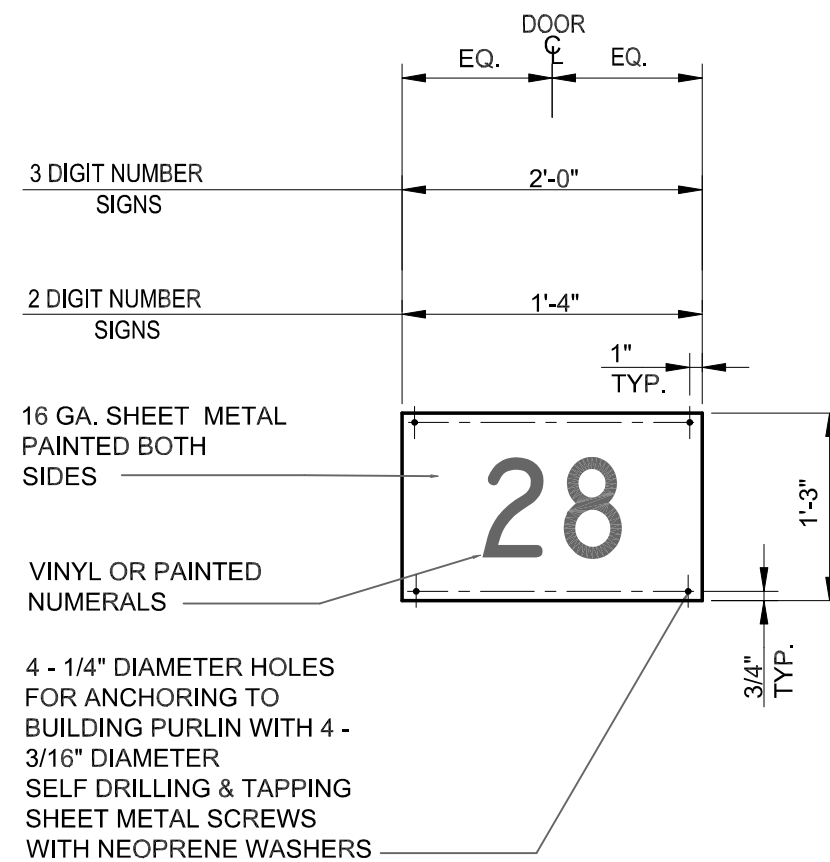
1/2 HORSEPOWER, 120 VOLT, SINGLE
PHASE HIGH VELOCITY FAN WITH
MAINTENANCE FREE MOTOR, AND THERMAL
OVERLOAD PROTECTION, INSTALLED WITH
STYLE 3 MOUNTING ARM AND ASSOCIATED
HARDWARE REQUIRED FOR A COMPLETE
INSTALLATION.

DOCK DOOR FAN SWITCH AND TIMING DEVICE:
MECHANICALLY SPRING WOUND, 0-8 HOUR TWIST TIMER
WITH A "NO HOLD" FEATURE, AND STAINLESS STEEL
COVERPLATE, YORK #CSC084, UNIT SHALL MOUNT IN A
2" DEEP SINGLE GANG FLUSH OUTLET BOX. ALL UNITS
FURNISHED WITH STAINLESS STEEL FACEPLATES.

MOUNTING PLATE BETWEEN "Z" GIRTS, PLATE FURNISHED
AND INSTALLED BY BLUESCOPE OR ITS GC.

04 STANDARD DOCK DOORS DETAILS (INTERIOR)

SCALE: 1/4" = 1'-0"



VINYL OR PAINTED
NUMERALS, REFER
TO NOTES FOR
FONT TYPE, SIZE,
AND PLACEMENT.

28

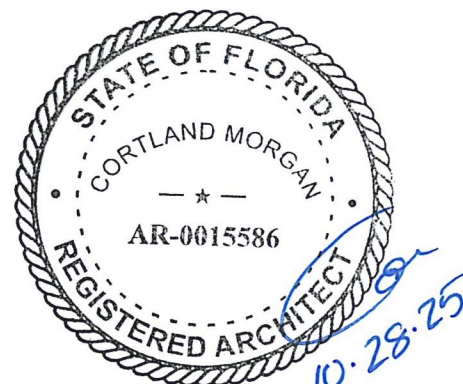
GENERAL NOTES:

- VERIFY OVERHEAD DOOR NUMERICAL SEQUENCE AND MOUNTING HEIGHTS WITH FXG.
- NUMBERS SHALL BE 9" HIGH WITH 1" WIDE LINES, BLACK ON WHITE BACKGROUND. FONT TYPE: TECHNICBOLD MATERIAL: PAINT OR VINYL
- APPLICATION OF NUMERALS TO THE INTERIOR DOOR SURFACE: NUMBERS SHALL BE APPLIED TO THE SECOND DOOR PANEL FROM THE BOTTOM OF THE DOOR AND SHALL BE LOCATED ABOUT THE CENTER LINE OF THE DOOR.

01 DOOR SIGNAGE

SCALE: NTS

REVISIONS



CORTLAND MORGAN
FLORIDA, REG. AR-0615586

SHEET NAME

DOOR & CAGE
DETAILS

SHEET NUMBER

A14